



THE SITUATION FOR A.I. TECHNICIAN/INSEMINATOR IN ITALY

European A.I Technicians Commission

2022 Rennes, France

ITALY OVERVIEW

- Number of farms are decreased in total, but cows population remains the same in terms of units
- Big farm are getting bigger
- The majority of insemination are done by the breeders or breeders employees
- UOFAA is in charge of training the new technician
- The number of inseminations has remained stable in the last years

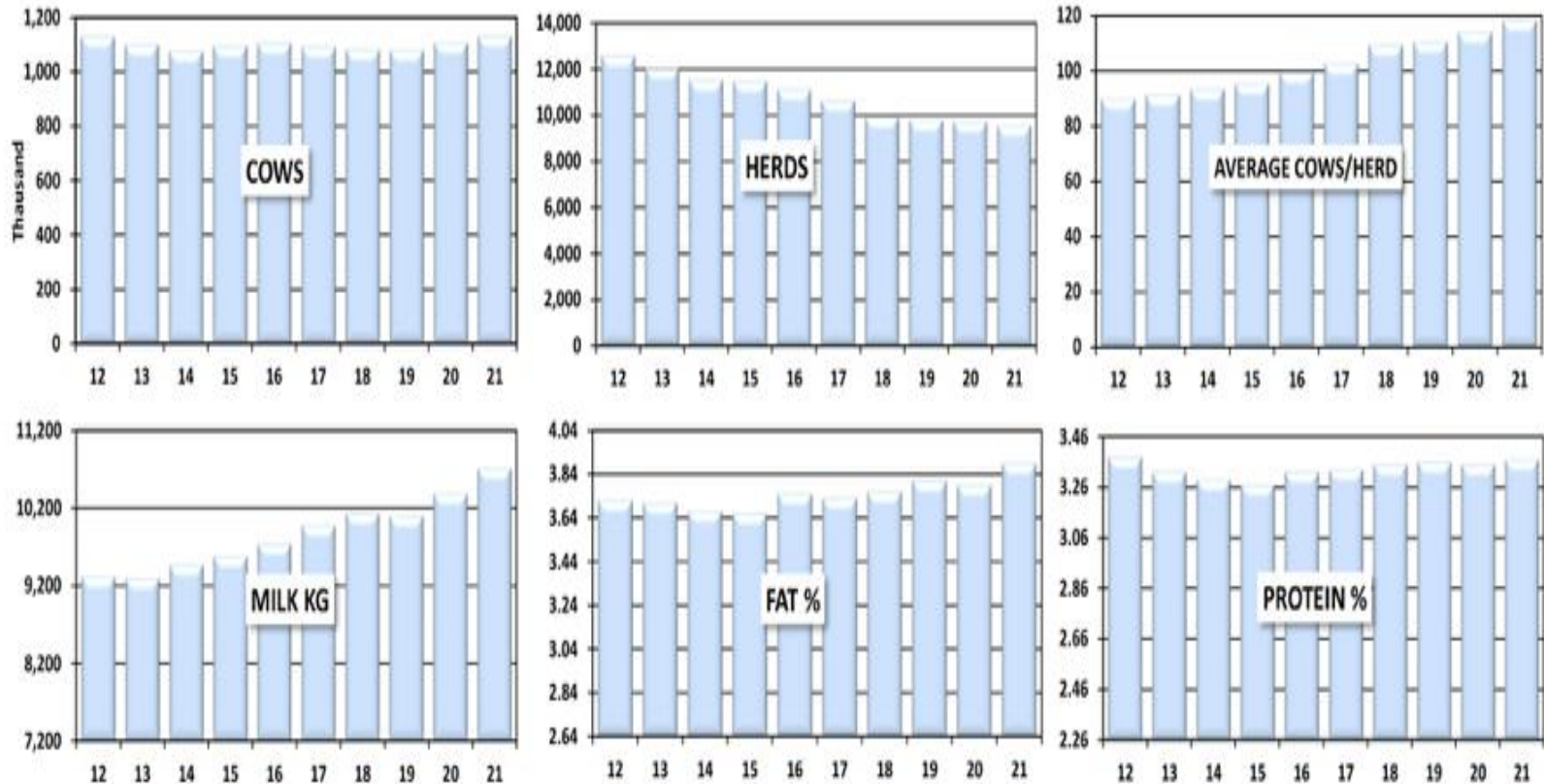
ITALY OVERVIEW

- In the recent years the number of beef insemination on dairy cows are increased
- Breeders are more and more focusing on economical aspects e.g. ratio milking cows/ young stocks
- Focusing on breeding exactly the young stocks that they really need for saving costs, and use beef semen

HOLSTEIN POPULATION IN THE YEARS

YEAR	CONSISTENCY		PHENOTYPICAL TREND			COWS FOR BREEDING
	FARMS	COWS	MILK KG	FAT %	PROTEIN %	
2012	12.578	1.130.270	9.320	3,72	3,38	90
2013	12.036	1.099.342	9.293	3,71	3,32	91
2014	11.517	1.076.181	9.472	3,67	3,29	93
2015	11.477	1.095.576	9.582	3,66	3,27	95
2016	11.123	1.106.461	9.742	3,75	3,32	99
2017	10.629	1.091.652	9.980	3,73	3,33	103
2018	9.896	1.081.855	10.136	3,76	3,35	109
2019	9.769	1.079.338	10.097	3,81	3,36	110
2020	9.711	1.107.536	10.286	3,79	3,35	114
2021	9.552	1.130.734	10.710	3,89	3,37	118

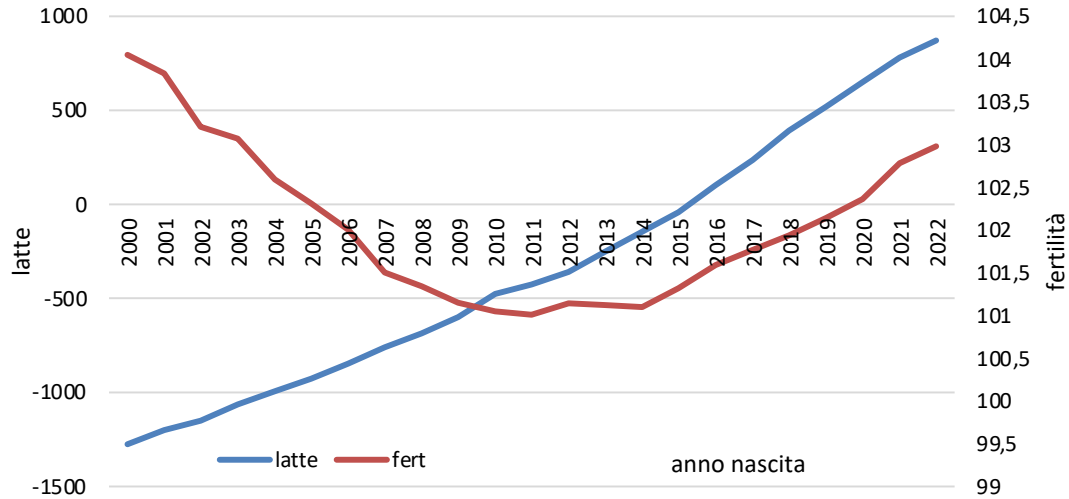
Holstein statistics 2012-2021



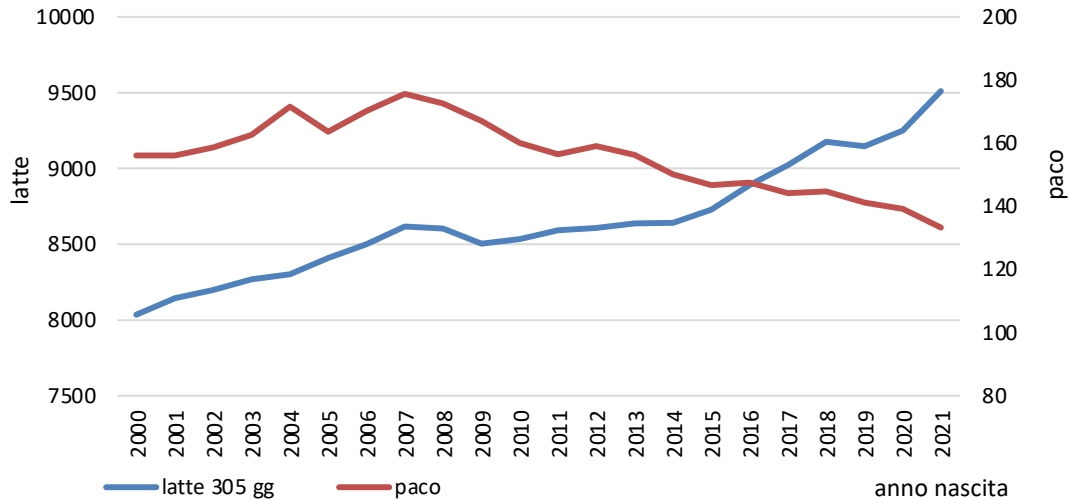


Trend Genotipici e Fenotipici

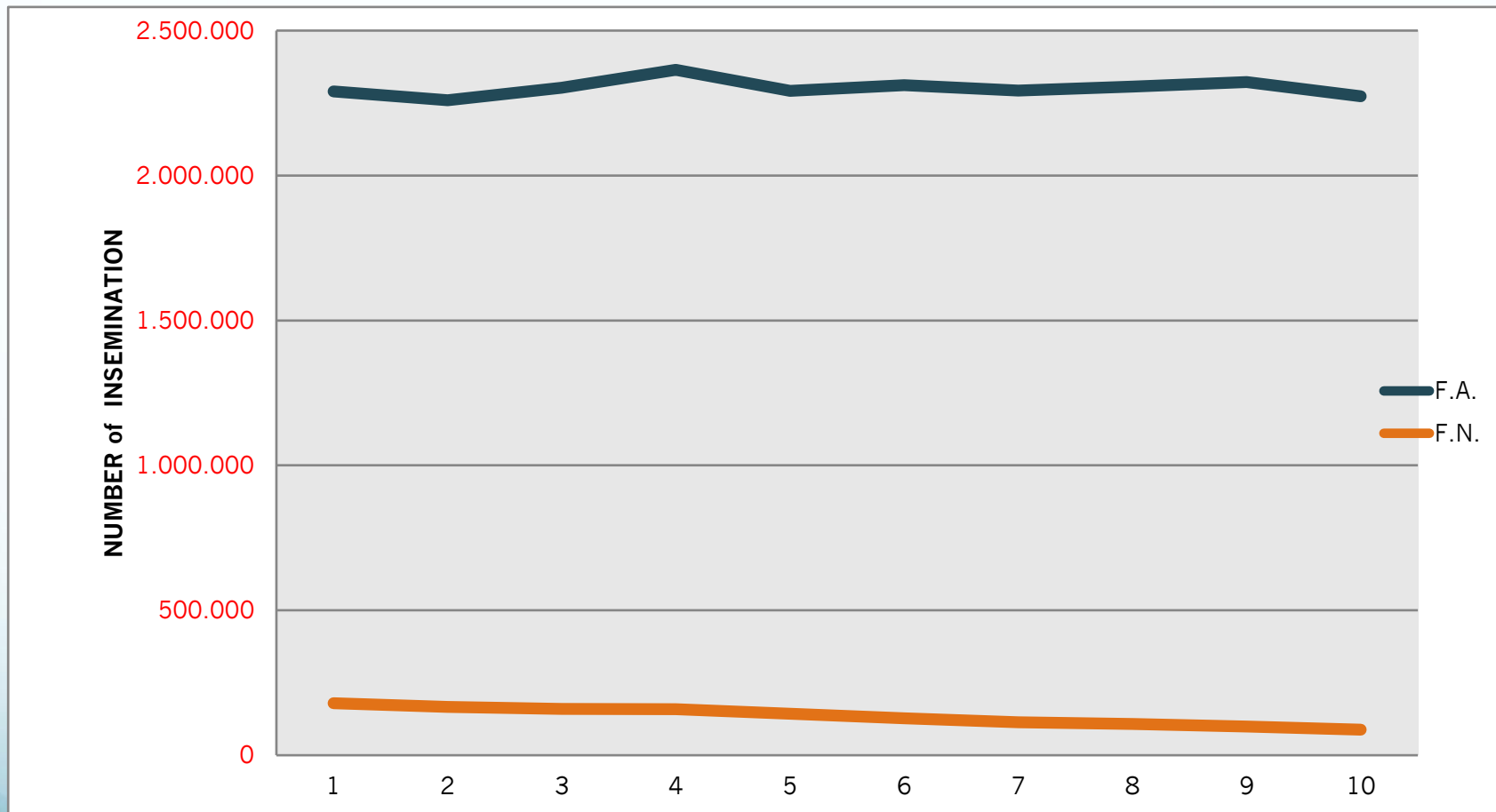
Trend Genetico



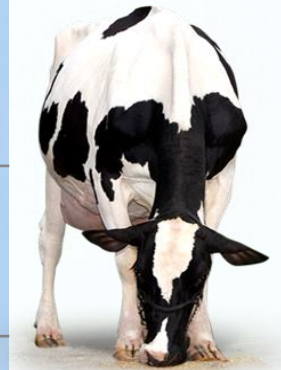
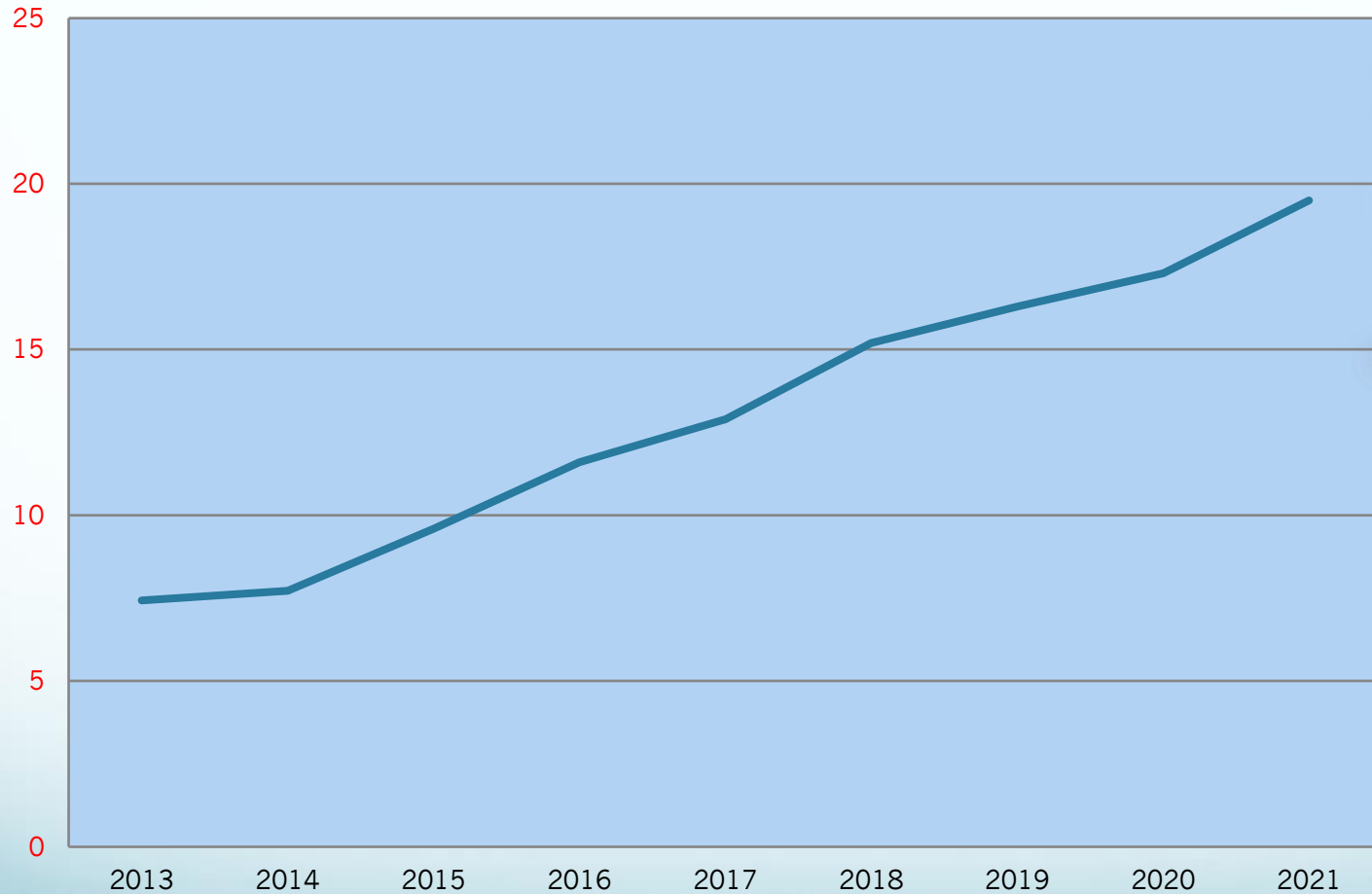
Trend fenotipici latte e parto concepimento Primipare



Trend of insemination registered Holstein 2012-2021



Trend on % Beef on Dairy insemination on 2013-2021





**In this map are reported
the number
of I.A. authorized and
operating for bovine, pig
and goat species**

SUMMARY

Starting more than 10 years ago some foreign semen importer, has started as to offer insemination service to their customers.

At today 5/6 company are offering this service.

Technicians, everyday, visit the farms to checking cows on heat ,using modern tools like collar or with checking marking cows ,and inseminate it

Technicians are not allowed to make pregnancy test on manual palpation or using ultrasound/ scanner

SUMMARY

Not only AI companies are doing that, sometimes it is also a cooperation between the AI company and the breeding company too.

In the past the kind of bulls were always bulls belonging to the AI companies that offer the service, nowadays the breeder can also add bulls from different companies

Thanks for your attention